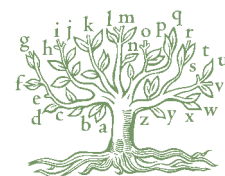


Personal stationery & envelopes — Price list.



TYPORETUM

NOVEMBER 2009

Correspondence cards (148 x 105 mm) — based on single-sided, 300gsm Somerset Velvet 100% cotton card stock.

QUANTITY:	100	200	500
One colour	£95.00	£115.00	£145.00
Two colour	£115.00	£135.00	£165.00

Business / Visiting cards — based on single-sided, 300gsm Somerset Velvet 100% cotton card stock.

QUANTITY:	100	200	500
One colour	£65.00	£85.00	£115.00
Two colour	£85.00	£105.00	£135.00

Change of Address cards (148 x 105 mm) — based on single-sided, 300gsm Somerset Velvet 100% cotton card stock.

QUANTITY:	100	200	500
One colour	£105.00	£125.00	£155.00
Two colour	£135.00	£155.00	£185.00

At Home cards (148 x 105 mm) — based on single-sided, 300gsm Somerset Velvet 100% cotton card stock.

QUANTITY:	100	200	500
One colour	£105.00	£125.00	£155.00
Two colour	£135.00	£155.00	£185.00

Matching Zerkall envelopes (to fit Correspondence, Change of Address & At Home cards)

QUANTITY:	100	200	500
White laid Smooth	£27.75	£50.00	£87.25
White laid grey tissue lined Smooth	£30.00	£55.50	£98.00

Return address printed onto envelopes

QUANTITY:	100	200	500
In addition to cost of envelopes	£37.50	£45.00	£67.50

Alternative paper options, pricing & samples are available on request.

Motifs, logos & illustrations can be added for an additional charge.

All typesetting and proofing costs are included and all of our stationery is supplied in presentation boxes.

The above prices include VAT at the current standard rate but exclude delivery.